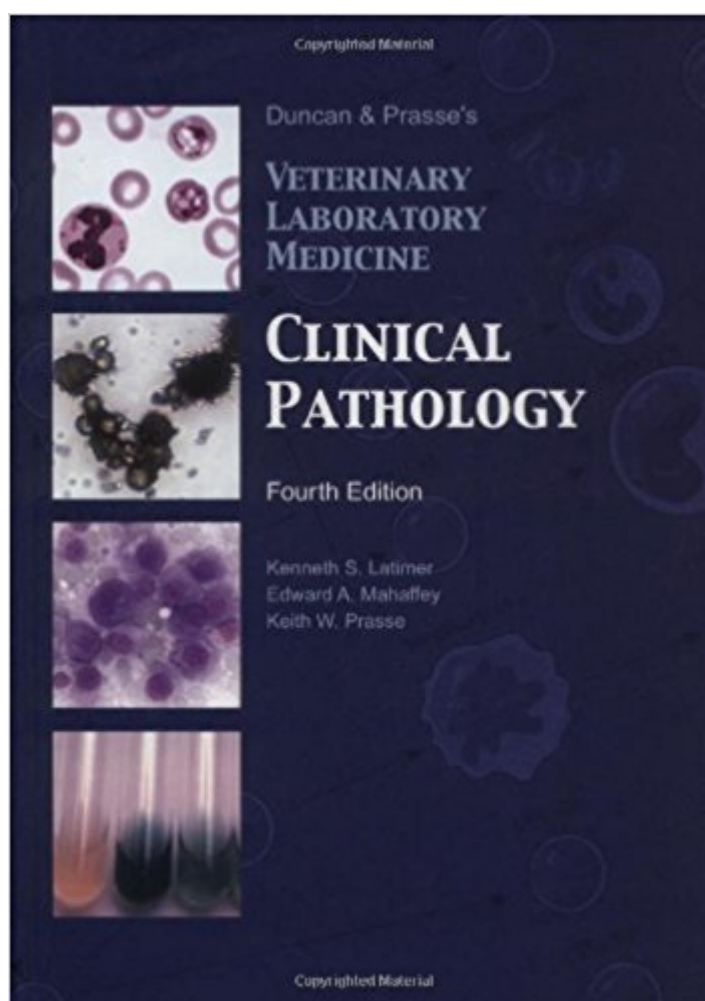


The book was found

# Duncan And Prasse's Veterinary Laboratory Medicine: Clinical Pathology, 4th Ed.



## Synopsis

Duncan and Prasse's *Veterinary Laboratory Medicine* provides the reader with an excellent overview of veterinary clinical pathology. The new edition retains its elegantly simple outline format and section organization (physiology, evaluation disorders, disorders, and appropriate clinical cases). This enables readers to quickly identify key words, ideas and information in the text. Each chapter is followed by a current reference list, primarily from refereed professional journals. As in previous editions, the fourth edition applies a problem-solving approach to interpretation of laboratory data. The authors stress the differential diagnosis of the abnormal laboratory value, and emphasize the mechanism or pathophysiology of the various abnormalities rather than specific diseases.

## Book Information

Hardcover: 450 pages

Publisher: Wiley-Blackwell; 4 edition (April 21, 2003)

Language: English

ISBN-10: 0813820707

ISBN-13: 978-0813820705

Product Dimensions: 7.3 x 1.1 x 10.3 inches

Shipping Weight: 2.9 pounds

Average Customer Review: 4.3 out of 5 stars 6 customer reviews

Best Sellers Rank: #2,076,609 in Books (See Top 100 in Books) #47 in [Books > Medical Books > Veterinary Medicine > Pathology](#) #884 in [Books > Textbooks > Medicine & Health Sciences > Veterinary Medicine > General](#) #2430 in [Books > Science & Math > Agricultural Sciences > Animal Husbandry](#)

## Customer Reviews

Duncan and Prasse's *Veterinary Laboratory Medicine* provides readers with an excellent overview of veterinary clinical pathology. The new edition retains its elegantly simple outline format and section organization (physiology, evaluation methods, disorders, and appropriate clinical cases), enabling readers to quickly identify key words, ideas and information in the text. Each chapter is followed by a current reference list, primarily from referred professional journals. The fourth edition applies a problem-solving approach to interpretation of laboratory data. covers dogs, cats, horses, domestic ruminants, pigs, and companion birds. instructs veterinary students and practitioners in the proper interpretation of clinical laboratory data in order to form a list of

differential diagnoses or to make a definitive diagnosis. emphasizes the mechanism or pathophysiology of the various abnormalities rather than specific diseases. adds and refines case studies to illustrate many of the concepts in interpretation of laboratory data includes excellent high resolution color photomicrographs and easy-to-understand tables and figures.

Kenneth S. Latimer, DVM, PhD, Dipl. ACVP, is professor of pathology and Director of the Clinical Pathology Laboratory in the College of Veterinary Medicine, University of Georgia, Athens. Keith W. Prasse, DVM, PhD, Dipl. ACVP, is professor of pathology and Dean, College of Veterinary Medicine, University of Georgia, Athens. Edward A. Mahaffey, DVM, PhD, Dipl. ACVP, is professor of pathology and Associate Dean for Public Service and Outreach, College of Veterinary Medicine, University of Georgia, Ath

An essential...

As advertised.

excellent

It is a good study supplement for pathology course. It provided pictures and explanations which I found helpful in my classes.

In my opinion, the best veterinary clinical pathology book. Great easy to read format. Consise, but providing more than just the basics. Great cases studies in the back that review topics.

Although complete, updated and deep covering most of the aspect of clinical pathology, exposition of the matter is done in the list form, like a "things to buy" note. It looks like a student's lesson note and the subject is not treated in the usual way a book does, as say with sensed phrases that correlate one to the next following a logical thread. It is more a manual than a book and it is something that is impossible to read one paragraph after the other, and even harder to remember. Anyway it carries a lot of useful information and helped me whenever i needed.

[Download to continue reading...](#)

Duncan and Prasse's Veterinary Laboratory Medicine: Clinical Pathology, 4th Ed. Duncan and Prasse's Veterinary Laboratory Medicine: Clinical Pathology by Kenneth S. Latimer (July 11 2011)

Veterinary Laboratory Medicine: Clinical Pathology Clinical Laboratory Blood Banking and Transfusion Medicine Practices (Pearson Clinical Laboratory Science) Clinical Veterinary Dentistry, An Issue of Veterinary Clinics: Small Animal Practice, 1e (The Clinics: Veterinary Medicine) Clinical Veterinary Dentistry, An Issue of Veterinary Clinics: Small Animal Practice, E-Book (The Clinics: Veterinary Medicine) Clinical Pathology and Laboratory Techniques for Veterinary Technicians Recent Advances in Virus Diagnosis: A Seminar in the CEC Programme of Co-ordination of Research on Animal Pathology, held at the Veterinary Research ... 1983 (Current Topics in Veterinary Medicine) Veterinary Clinical Pathology: A Case-Based Approach (Veterinary Self-Assessment Color Review) Veterinary Clinical Pathology: A Case-Based Approach (Veterinary Self-Assessment Color Review Series) Immunology & Serology in Laboratory Medicine, 5e (IMMUNOLOGY & SEROLOGY IN LABORATORY MEDICINE ( TURGEON)) Immunology & Serology in Laboratory Medicine - E-Book (IMMUNOLOGY & SEROLOGY IN LABORATORY MEDICINE ( TURGEON)) Laboratory Medicine Diagnosis of Disease in Clinical Laboratory 2/E (Lange) Clinical Laboratory Hematology (3rd Edition) (Pearson Clinical Laboratory Science Series) Clinical Laboratory Chemistry (2nd Edition) (Pearson Clinical Laboratory Science Series) Advances in Veterinary Oncology, An Issue of Veterinary Clinics of North America: Small Animal Practice, 1e (The Clinics: Veterinary Medicine) Advances in Veterinary Oncology, An Issue of Veterinary Clinics of North America: Small Animal Practice, E-Book (The Clinics: Veterinary Medicine) Pathology for Toxicologists: Principles and Practices of Laboratory Animal Pathology for Study Personnel Robbins Basic Pathology: With VETERINARY CONSULT Access, 8e (Robbins Pathology) Neonatal Medicine and Surgery, An Issue of Veterinary Clinics: Equine Practice, 1e (The Clinics: Veterinary Medicine)

[Contact Us](#)

[DMCA](#)

[Privacy](#)

[FAQ & Help](#)